



ON SITE MACHINING

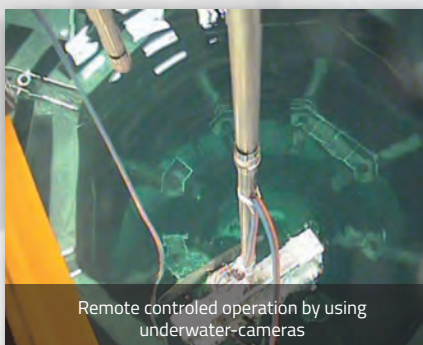
METAL CUTTING SOLUTIONS
TECHNOLOGIES FOR NUCLEAR
DECOMMISSIONING



NUCLEAR SITE



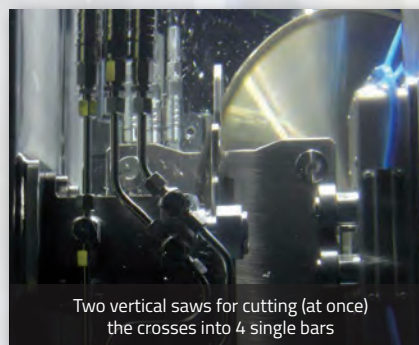
Segmentations of "hot components" inside the cooling pond of the nuclear power plant



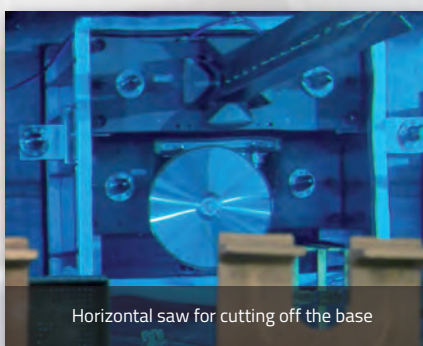
Remote controlled operation by using underwater-cameras



Removing the cut segments



Two vertical saws for cutting (at once) the crosses into 4 single bars



Horizontal saw for cutting off the base

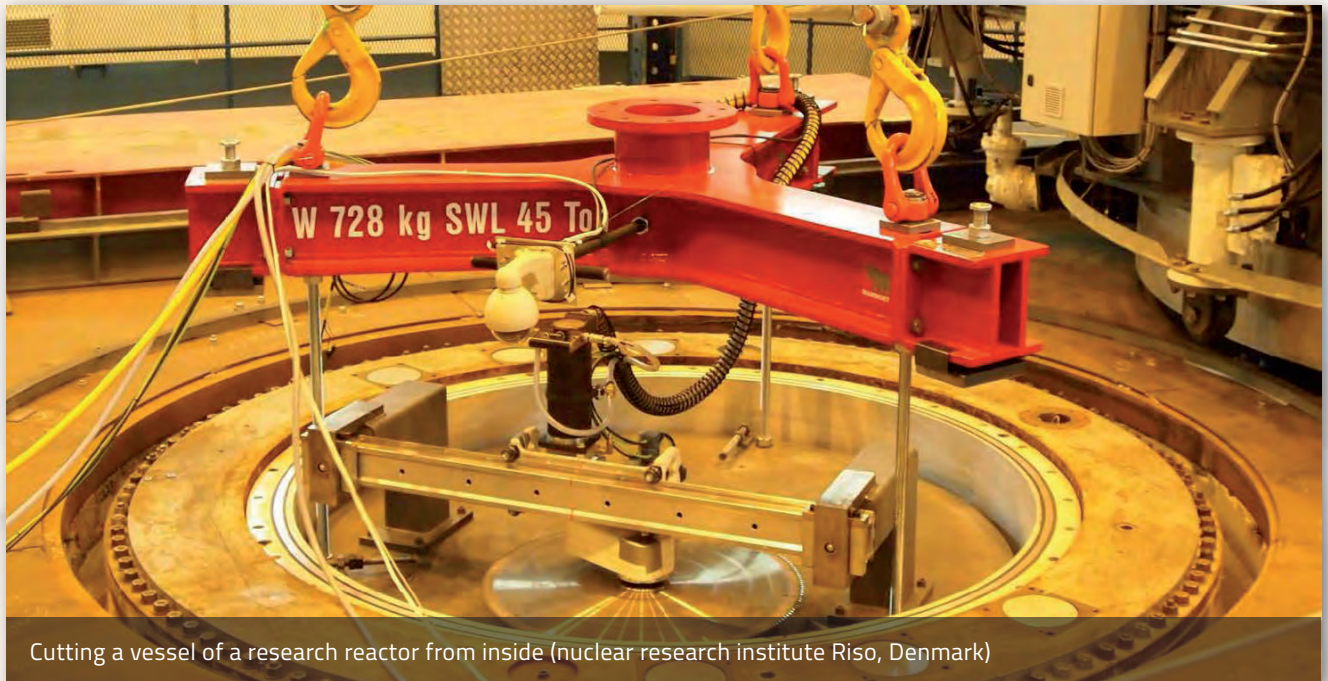


Cutting the cap of a research reactor in Denmark



Cutting 700 mm thick plates of a radiation-shield (for NIS Siempelkamp)

CUTTING SOLUTION



Cutting a vessel of a research reactor from inside (nuclear research institute Riso, Denmark)



Smooth cutting surface, even the cut was done from two sides



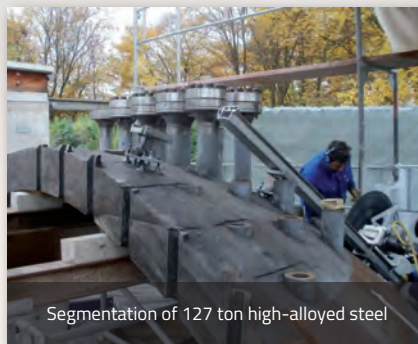
Cutting off pipes of the cooling system in a German nuclear power plant (belt fixing)



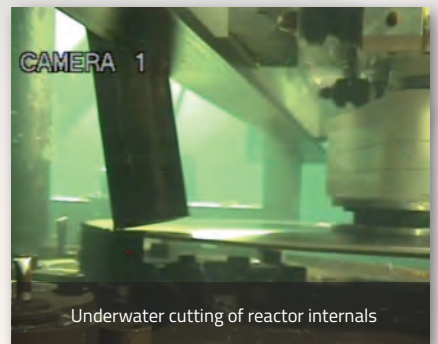
Segmentation of a diesel engine



Cutting a closure head in pieces

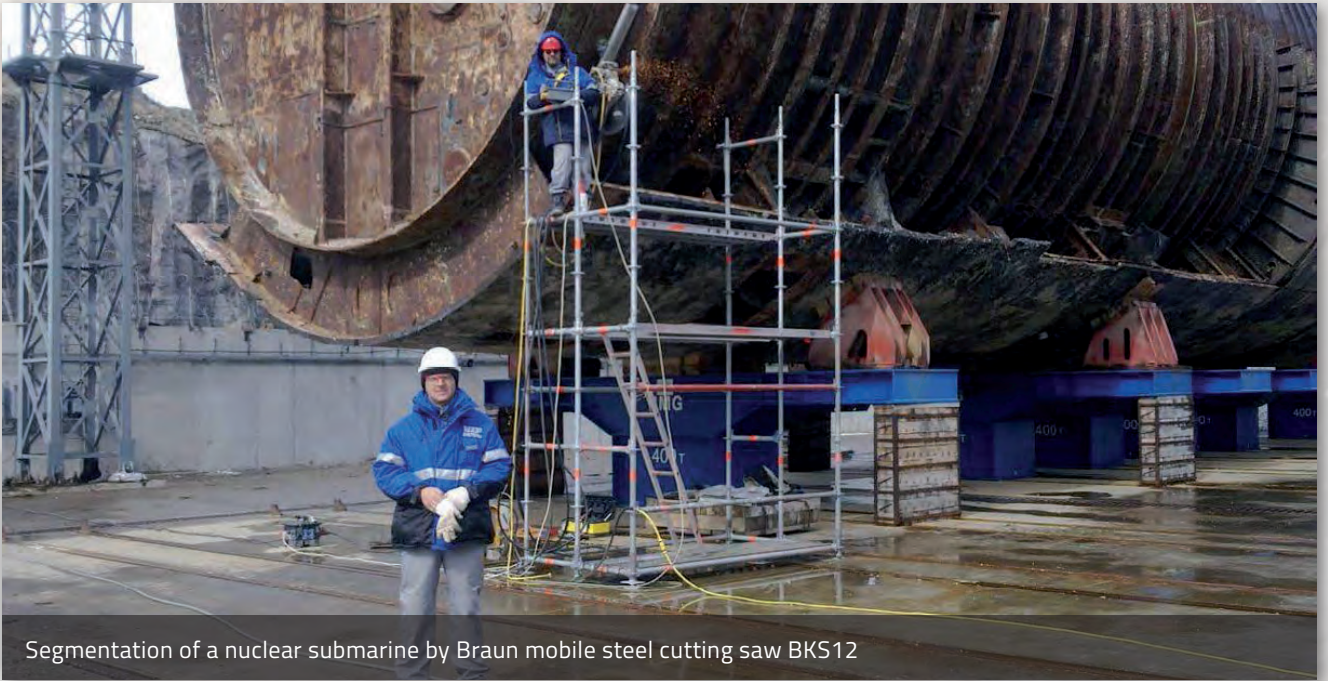


Segmentation of 127 ton high-alloyed steel



Underwater cutting of reactor internals

DECOMMISSIONING



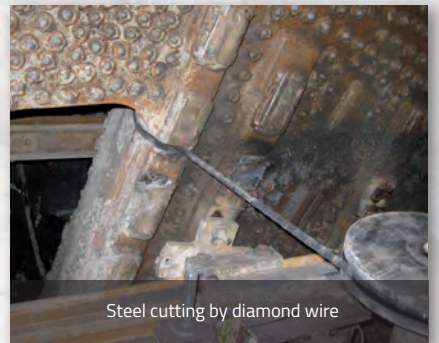
Segmentation of a nuclear submarine by Braun mobile steel cutting saw BKS12



Plunge wire sawing of steel tubes in a nuclear power plant in Spain



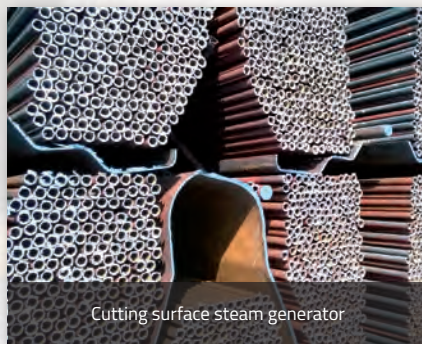
Steel cutting by diamond wire



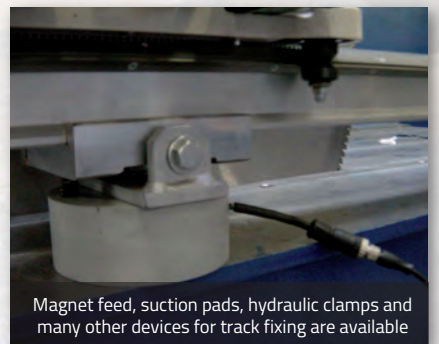
Steel cutting by diamond wire



Segmentation of a steam generator by diamond wire sawing



Cutting surface steam generator

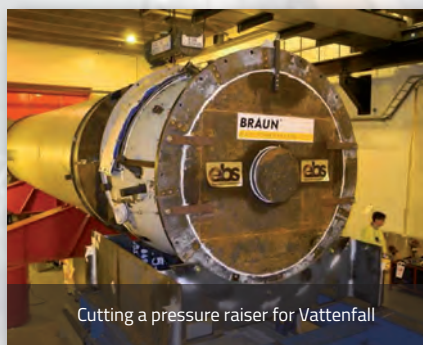


Magnet feed, suction pads, hydraulic clamps and many other devices for track fixing are available

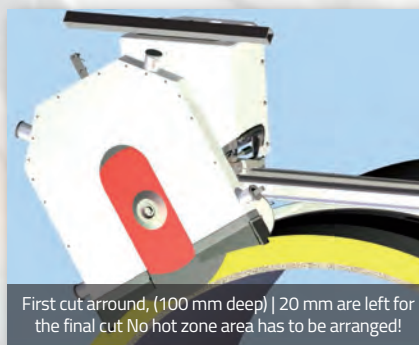
CUTTING SOLUTION



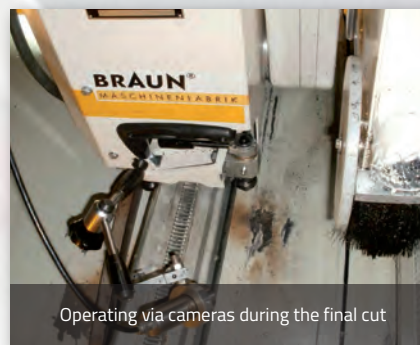
Cutting of Metal Structures



Cutting a pressure raiser for Vattenfall



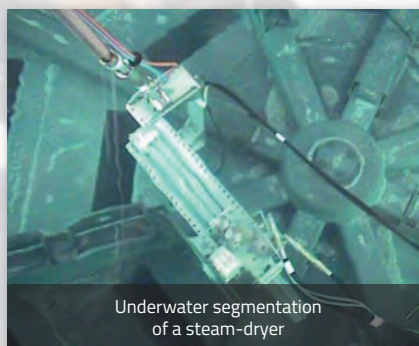
First cut around, (100 mm deep) | 20 mm are left for the final cut No hot zone area has to be arranged!



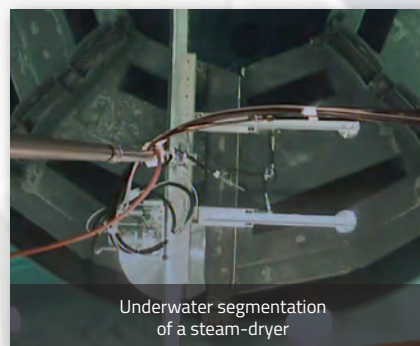
Operating via cameras during the final cut



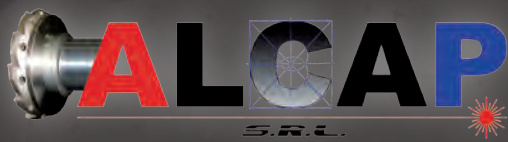
Removal of a segment from the calotte for microstructure analysis of the welding



Underwater segmentation of a steam-dryer



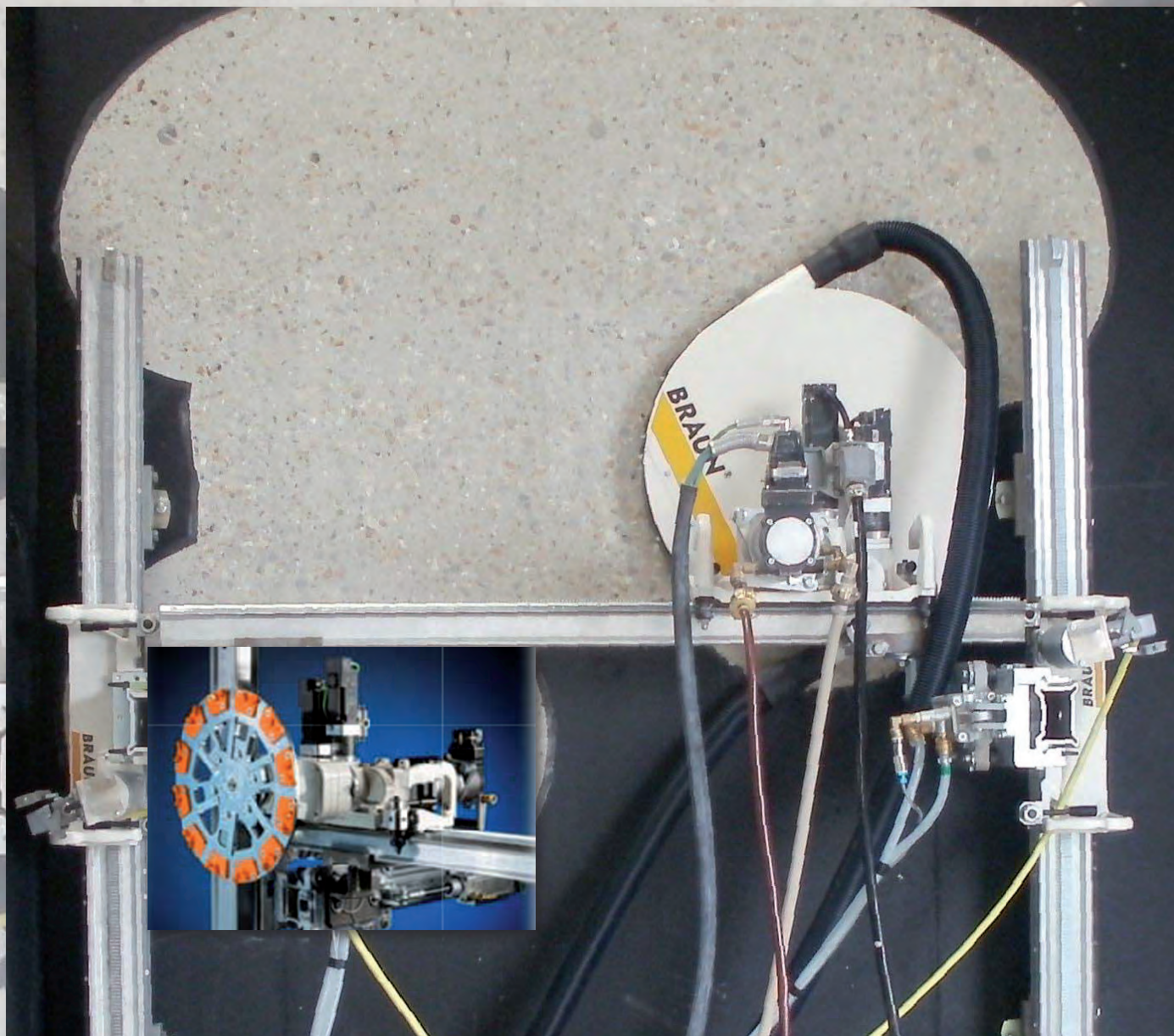
Underwater segmentation of a steam-dryer



ON SITE MACHINING

WALL SHAVING SYSTEM

FOR PROCESSING OF WALLS,
CEILING AND MANY OTHER SURFACES



ALCAP Srl

Via Gavardina, 4B - 25081 Bedizzole (BS) - Italy
T +39 335 7020603 | P. I. 03513290175
info@alcap.net - www.alcap.net